



Power tools



Dates and images

Intrauma S.r.l. reserves the right to modify the design and finishing of the products shown and described in the present catalog without any notice. The images are informative and only regarded as examples.

The information provided is purely indicative of the products displayed. Such information does not constitute an accurate description of the characteristics on the part of the manufacturer.

We therefore invite our clients to always contact Intrauma S.r.l. to obtain full details on our product's specifications.

Copyright

The content of the present catalog's pages is protected by Copyright. Reproduction of its content is allowed only with permission from Intrauma S.r.l. Reproduction and distribution of this catalog is strictly forbidden without permission.

Solomax Ultra2Series Re-usable

The Solomax Ultra2Series Re-usable Power Tools are the perfect solution for:

- Freelance surgeons
- General Hospitals
- 24H emergency Hospitals
- General practitioners who occasionally do orthopedic surgery
- Backup at Specialty Centers

The Solomax power Tools have been in use in Human Orthopedic surgery since years offering all the features of a professional orthopedic power Tool without incurring in Capital expenditure and Repair Costs.

Solomax offers a complete range of handpieces used with the same battery pack or same power console:

- Oscillating saw (TTA – DPO/TPO – Corrective osteotomies)
- Crescentic Saw (TPLO)
- Power Drill

Solomax Ultra2Series Re-usable is a new concept in power Equipment management; due to the affordable cost of a single handpiece, Surgeons can replace it straight away when damaged or broken and this may result in even smaller cost than repairing a professional power Tool.

This new concept in power equipment will also eliminate the wait for repair and the consequent turnover loss deriving from this.

The Solomax Ultra2Series handpieces are provided Sterile and can be Re-sterilized with ETO or using steam Autoclave up to a fixed maximum number of cycles.

The Solomax Ultra2Series engines are operated on a Lithium-Ion Rechargeable Battery or using a Power console. The Battery and the power cable of the power console cannot be Re-sterilized.



Macro sterile engines reusable

Features and benefits:

- No capital expenditure
- No repair cost
- No repair wait
- Semi-disposable
- Affordable handpiece > affordable replacement cost
- Affordable backup
- Re-sterilization (ETO or steam autoclave 121 degrees celsius - 1 bar)
- Lightweight
- Provided sterile
- Reliable
- Powerful

SMX6001 TPLO Saw

- Max Power 300W
- No load Speed 14000 cycles per min
- Cutting ARC ca. 4 degree
- Weight 720g (hand piece only) 1000g (with battery)



SMX2001-00 – Oscillating Saw

- Lightweight 720gr
- Operating Speed 0-14'500 oscillations per minute



SMX2018-00 – Drill

- Lightweight 870gr
- Operating Speed 0-1500 rpm
- Forward and reverse direction

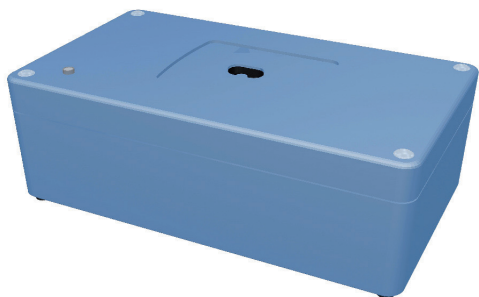


NOTE: Repair service is not offered for Solomax handpieces and equipment.

Macro sterile engines accessories (single use)

SMX2021-00 Charger

- AC Input 100V – 220V
- Auto cut off
- LED display
- Weight 360gr



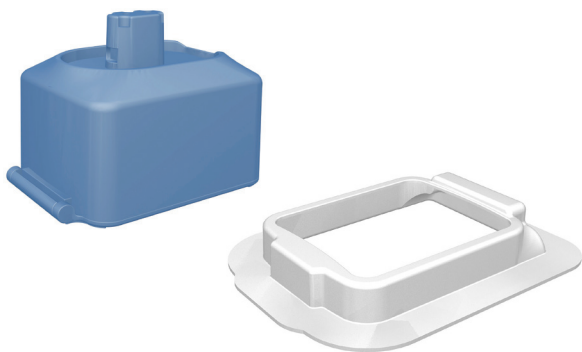
SMX2026-00 Rechargeable Battery

- Powerful Lithium-Ion Cell
- Rechargeable DC 10V
- Can be fully recharged < 45 minutes
- Compact and lightweight at only 210gr



SMX2030-00 Battery Kit

- Funnel transfer included
- Weight 80g



SMX2034-00 Power Console

- AC Input 100V – 220V
- Advanced switch mode operation
- Peak current protection at 33 amps
- Weight 2300gr



SMX2038-00 Power Cable

- Length 3 meter



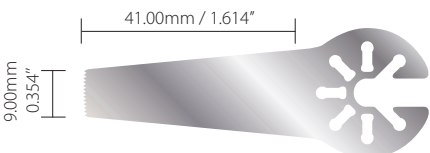
Note: the battery, the power cable and any other accessory (charger, power console, etc.) should not be washed or sterilized. Devices at issue are disposable.

Surgical power accessories

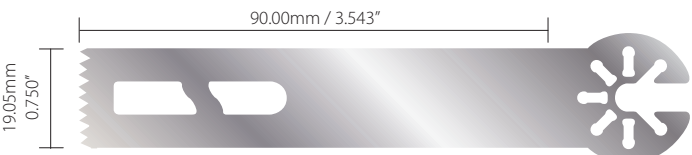
VBL01 – Thickness 1.00mm / 0.039"



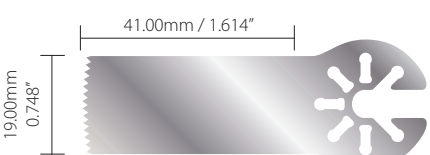
VBL05 – Thickness 0.40mm / 0.016"



VBL02 – Thickness 0.89mm / 0.035"



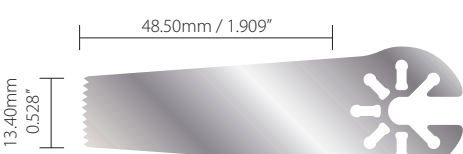
VBL06 – Thickness 0.40mm / 0.016"



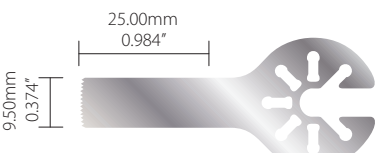
VBL03 – Thickness 1.00mm / 0.039"



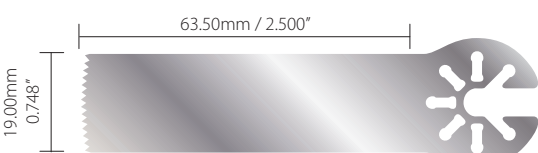
VBL07 – Thickness 0.40mm / 0.016"



VBL04 – Thickness 0.40mm / 0.016"



VBL08 – Thickness 0.60mm / 0.024"



Fixin saw blade TPLO/CBLO

VS912 – rad. 12mm



VS915 – rad. 15mm



VS918 – rad. 18mm



VS921 – rad. 21mm



VS924 – rad. 24mm



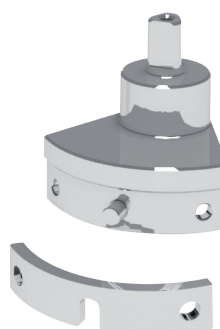
VS927 – rad. 27mm



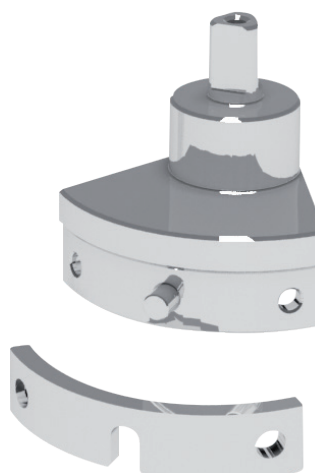
VS930 – rad. 30mm



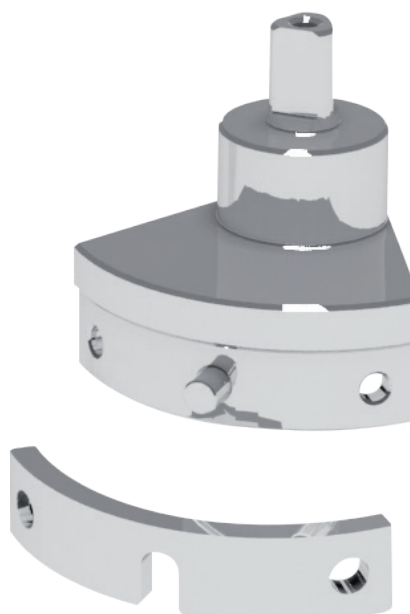
VS940 – Hub small rad. 12-15mm



VS941 – Hub medium rad. 18-21mm



VS942 – Hub large rad. 24-27-30mm





DISTRIBUTED BY:



Intrauma S.r.l. - Via Genova, 19 - 10098 Rivoli (TO) Italia
Tel. +39.011.953.94.96 - Fax +39.011.957.42.91 - fixin@intrauma.com - www.intrauma.com

USA Office: **Intrauma America LLC** – Suite 304 - 50 Harrison str. - 07030 Hoboken - NJ
P. 201.420.0110 - F. 201.420.0228 – orders@intrauma.com